





CONSTRUCTION, STEEL FABRICATION,  
PORTA CAMPS, INSULATED SANDWICH  
PANEL MANUFACTURERS

© Nova Engineering Enterprises





# Introduction

Nova Engineering Enterprises was established in 1993 mainly as an automotive component manufacturing unit and in 1995 expanded its scope to construction and steel fabrication works, and since we have completed several projects on turn- key basis for a variety of our satisfied clientele.

Our clients range from POF WAH Industries, Organisations of national interests, Foreign Missions, SSG Training Camps Tarbela, Ghazi Airbase, Attock Fort, Army Bahadur Range Attock, Oil & Gas Companies and many more Government, Semi Government and Multinational Companies. at Nova Engineering our services are not limited just to construction and fabrication, we have complete solution for power, HVAC, Carpentry, Plumbing and other allied services.

Nova Engineering Enterprises on its 2-acre facilities situated at RCCI Industrial Estate, Rawat, near Rawalpindi/Islamabad is engaged in manufacturing/fabrication of products as listed forward.



# Our Expertise



## Pre-Engineered Building

We specialize in Pre-Engineered Buildings (P.E.B) that are tailor made according to customer's needs using latest techniques and technology.

## Pre-Fabricated Structure

One of our core competencies is Pre-Fabricated structures which are widely used all over Pakistan because of their light weight, earthquake resistance, high durability and fast installation.

## Shearing and Bending

With 250 Ton Hydraulic press we can bends on steel plate up to 13mm, can cut steel plate up to 13mm with precision.



### EPS Manufacturing

EPS is manufactured in our high-tech automated plant from Densities from 10Kg/Mt3 up to 35Kg/Mt3 in FR (fire retardant ) as well as non FR types.

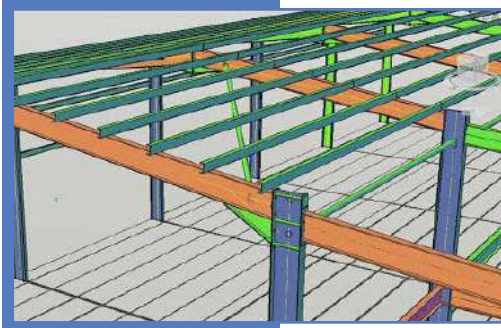
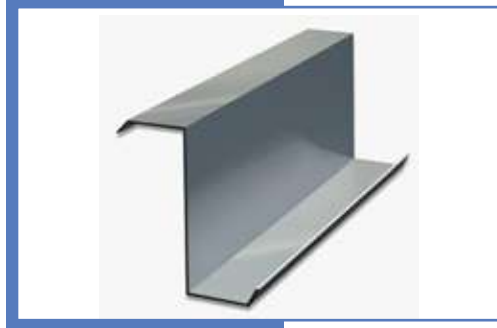
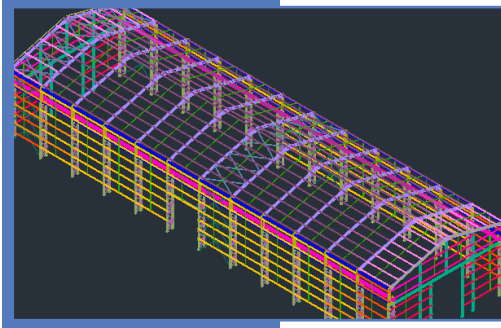
### Sheet Profiling

Five (5) curve profile from 0.3mm to 1mm for roofing sheet and overlap system gives zero water leakage and easy installation.

### EPS Insulated Sandwich Panels

Insulated Sandwich panel from thickness 2 inches upto 10 inches using Expanded polystyrene as insulation in FR (fire retardant) as well as non-FR Material.





### Designing of Structures

Professional Structural engineers and tools to design integrated civil and mechanical structures.

### Z-Purlin

The machine can make Cold rolled Z-Purlin for steel structures form 4inches to 12 inches and thickness from 1mm to 3mm.

### CNC Plasma Cutting

CNC Plasma Machine which can cut Steel upto 4 inches with tolerance of 0.1%.



### Oil & Gas Steel Fabrication

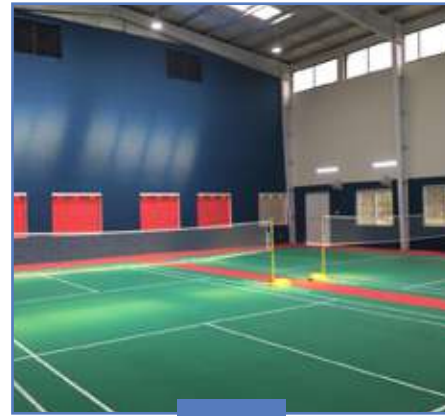
Certified Welders & equipment, QA&QC engineers and complete sandblasting and grit blasting facility give us edge in the field of Oil and Gas.

### General Steel Fabrication

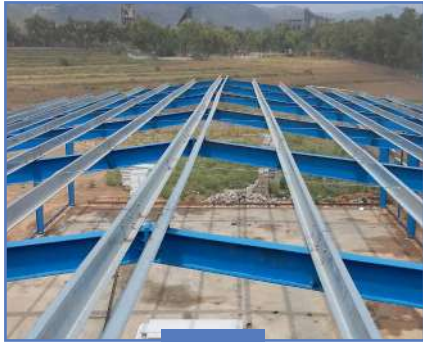
Pipe bending, Sheet rolling machines for tank fabrication, lathe machine, milling machine, bench press and iron worker makes all sort of general fabrication work easy to accomplish.



# Projects



Fabrication of Gymnasium and Yoga Center at POF WAH



Pre-Engineered Shed of Size 60' X 200' For Zubeida's Home Store at Tarnol



Steel structure Of Size 77' X 134' At Iqra University Islamabad



Pre-Fabricated School for Army Public School at Cherat



Pipe Support and Equipment support For German Company





Oil & Gas Pipe support for  
GASCO Engineering Services



Pre-Engineered Structure  
of Size 60' X 80' X 35' Height  
for Chemical manufacturing  
unit at Hattar



Storage warehouse At POF  
WAH of 30,000 Sqft



Live Fire Shoot House with  
Bullet arrestors





Closed Artillery Range



DIGITAL Sign Board For PDA



POF Hawelian Building



POF WAH Plant Shade



# Our Clientele



Embassy of United States



Pakistan Ordnance



GASCO Engineering Services



Iqra University



MOL Oil and Gas



Army Heritage Foundation



B.L Harbett Internationals



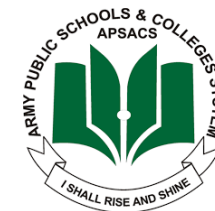
Pakistan Army



Zubaidas Home store



Mujahid Group

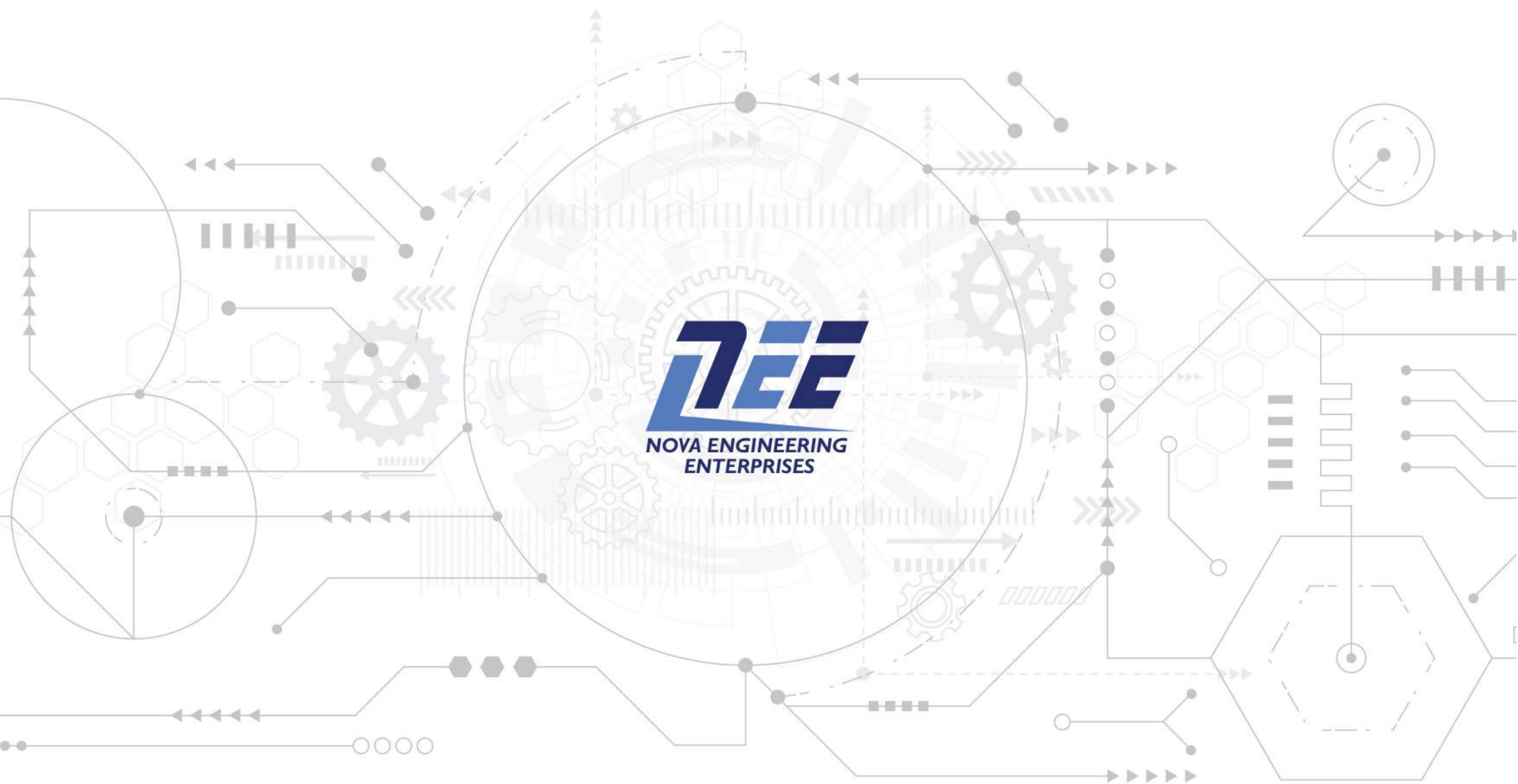


Army Public School



Peshawar Development Authority





**Office:** 3296, adamjee road saddar rawalpindi 46000-Pakistan

**Factory:** Plot # 9& 5 Street N-3 & N-4, RCCI Industrial Estate Rawat Rawalpindi-Pakistan

+92-51-4499100 | +92-51-5521033 | +92-51-4499166